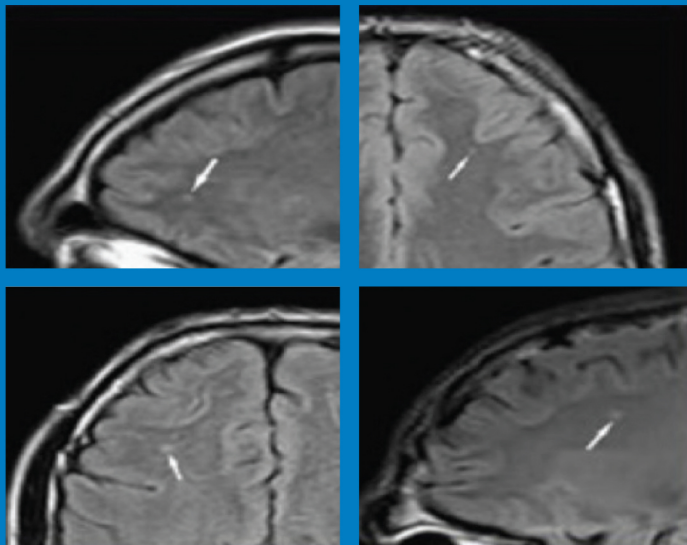


## A COMPREHENSIVE APPROACH FOR RELIABLE RESULTS.

Some post-traumatic brain injuries are easily assessed with standard CT and MRI scans. But for a truly accurate diagnosis you need to go beyond basic techniques for an all-around, in-depth look. That's what SimonMed provides. Our highly specialized equipment offers an additional seven sequences for a 100% complete and precise picture.

It's your diagnosis. Partner with the best.



## TRAUMATIC BRAIN INJURY IMAGING

### OUR VISION

SimonMed was founded on the belief that every single person should be able to receive the very highest level of care, by leading specialists in every radiology discipline, using the newest diagnostic imaging technologies – and that it should be affordable and easily accessible. We are committed to providing the most accurate diagnoses in a safe, supportive, compassionate environment.



#### ACCURATE RESULTS

The most reliable diagnoses from the largest private specialized outpatient radiology group in the country.



#### AVAILABLE ON LIEN

No payment up front, liens held by SimonMed.



#### CONVENIENT LOCATIONS

Anthem, Camelback, Casa Grande, Estrella, Fountains, Mesa Desert/Tempe, Paradise Valley, Phoenix, Thompson Peak, and Orange Grove



#### ADVANCED TECHNOLOGY

Specializing in expert diagnostic imaging technologies.



#### COMPREHENSIVE CARE

Experts who cover all areas of radiology so you are in the very best hands at all times.

# SPIN

SimonMed Personal Injury Network

Scheduling: [PI\\_Schedulers@simonmed.com](mailto:PI_Schedulers@simonmed.com)

Scheduling Fax: 415-433-3536

Billing & Medical Records: [attorney@simonmed.com](mailto:attorney@simonmed.com)

Billing & Medical Records Fax: 602-302-5960

